

LIFECYCLE EXTENSION GUIDE



Contents

Table of Contents

Important Safety Notice-----	3
1. Exploded Diagram -----	4
2. Wiring connectivity diagram-----	5
3. Mechanical Instructure-----	6
4. Assembly and Disassembly Procedures-----	7
5. Troubleshooting-----	15
6. FRU List-----	18

Safety Notice

Any person attempting to service this chassis must familiarize with the chassis and be aware of the necessary safety precautions to be used when serving electronic equipment containing high voltage



Important Safety Notice

Product Announcement:

This product is certificated to meet RoHS Directive and Lead-Free produced definition. Using approved critical components only is recommended when the situation to replace defective parts. Vender assumes no liability express or implied, arising out of any unauthorized modification of design or replacing non-RoHS parts. Service providers assume all liability.

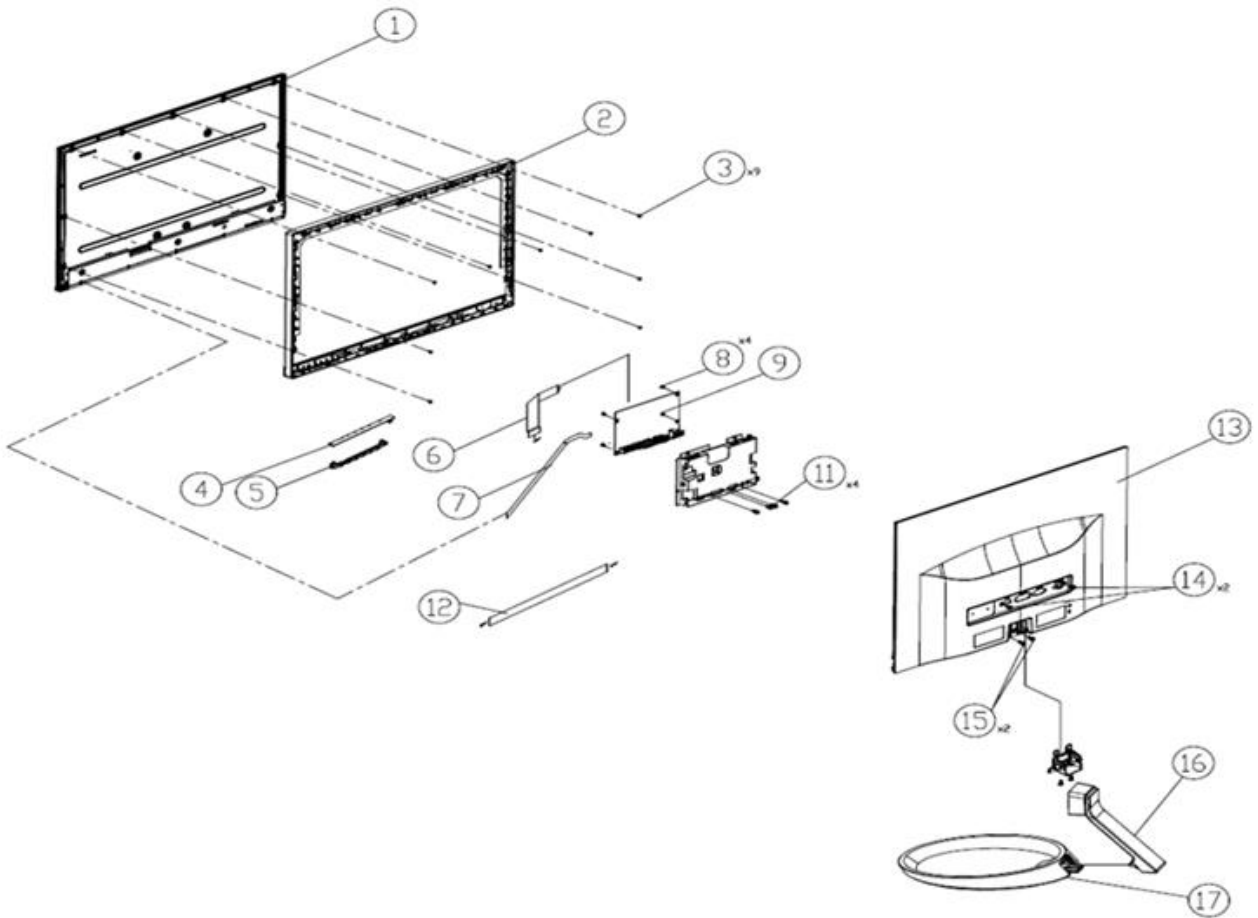
Qualified Repairability:

Proper service and repair is important to the safe, reliable operation of all series products. The service providers recommended by vender should being aware of notices listed in this service manual in order to minimize the risk of personal injury when perform service procedures. Furthermore, the possible existed improper repairing method may damage equipment or products. It is recommended that service engineers should have repairing knowledge, experience, as well as appropriate product training per new model before performing the service procedures.

NOTICE:

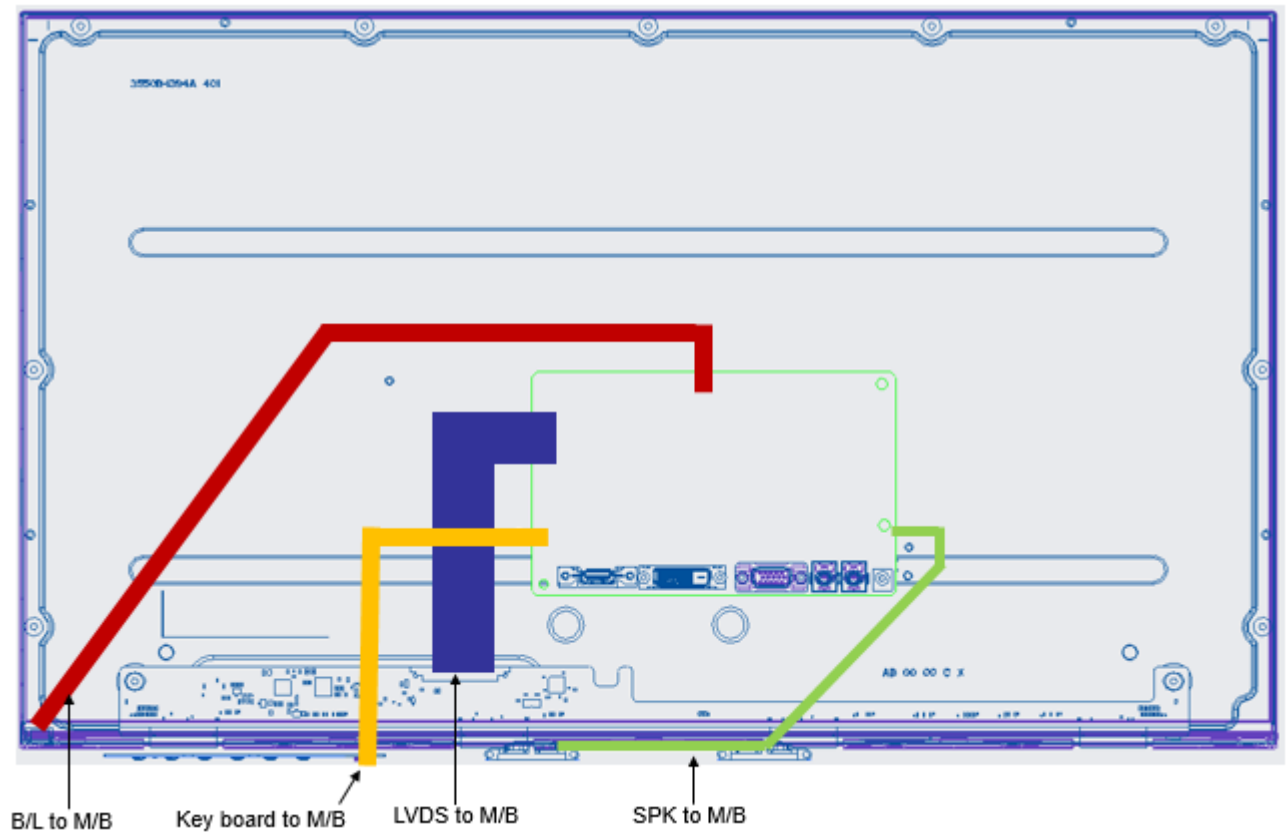
- ! To avoid electrical shocks, the products should be connect to an authorized power cord, and turn off the master power switch each time before removing the AC power cord.
- ! To prevent the product away from water or exposed in extremely high humidity environment.
- ! To ensure the continued reliability of this product, use only original manufacturer's specified parts.
- ! To ensure following safety repairing behavior, put the replaced part on the components side of PWBA, not solder side.
- ! To ensure using a proper screwdriver, follow the torque and force listed in assembly and disassembly procedures to screw and unscrew screws.
- ! Using Lead-Free solder to well mounted the parts.
- ! The fusion point of Lead-Free solder requested in the degree of 220°C.

1. Exploded Diagram



ITEM	PART NO.	Description
1	RB5LM230WFA-SNQ5	LCM ASS'Y RB5LM230WFA-SNQ5(RAKEN)
2	R180101013010	MID FRAME<ABS 94-HB/K21411>(G237HL) ASS'Y
3	R172050030450	MAC. SCREW-MI M3.0*4.0L, BLK-Ni LM250WF5-SAA1
4	R352500220156	DISPLAY BD ASS'Y (Acer G228HQL bi)
5	R170104004010	DISPLAY KEY<ABS 94-HB/K21411>(G227HQL)
6	R046128301341	WH FFC 30P<(1.0mm)300mm (2FOLD)90V G/F W/CONN.<A15+BC>LF
7	R046428080671	WH FFC 8P<(0.5mm)175mm(1FOLD PRD)60V G/F (A8 A15)LF
8	R172740030450	MAC. SCREW-MRF M3.0*4.0L, BLK-Ni
9	R352305420150	MAIN BD ASS'Y (R230H bmid)(R2)
10	R171201000540	MAIN SHIELDING<SECC 0.5t>(G227HQL bmid)
11	172070440520	MAC. SCREW-MH #4-40*5.0L,Ni
12	R046128080671	WH FFC 8P<(0.5mm)175mm(1FOLD+PRD)90V G/F (A8+A15)LF
13	R180102020050	REAR COVER<ABS 94-HB/K21411>(G237HL bmid) ASSY
14	172050030650	MAC. SCREW-MI M3.0*6.0L, BLK-NI<HEAD DIAMETER 7.0>
15	172100031050	TAP. SCREW-TB #3*10.0L, BLK-Ni
16	R181304006010	BASE NECK ASSY (R220&R230)
17	R180105610010	BASE ASSY(R0)

2. Wiring Connectivity diagram



3. Mechanical Instruction

Tools Required

List the type and size of the tools that would typically can be used to disassemble the product to a point where components and materials requiring selective treatment can be removed.

Tool Description:

- working table
- Screw-driver
- Knife
- glove
- cleaning cloth
- ESD protection

4. Assembly and Disassembly Procedures

➤ Disassembly Procedure

Step. 1 Pull the base & stand assembly out



Step.2 Unscrew four screws



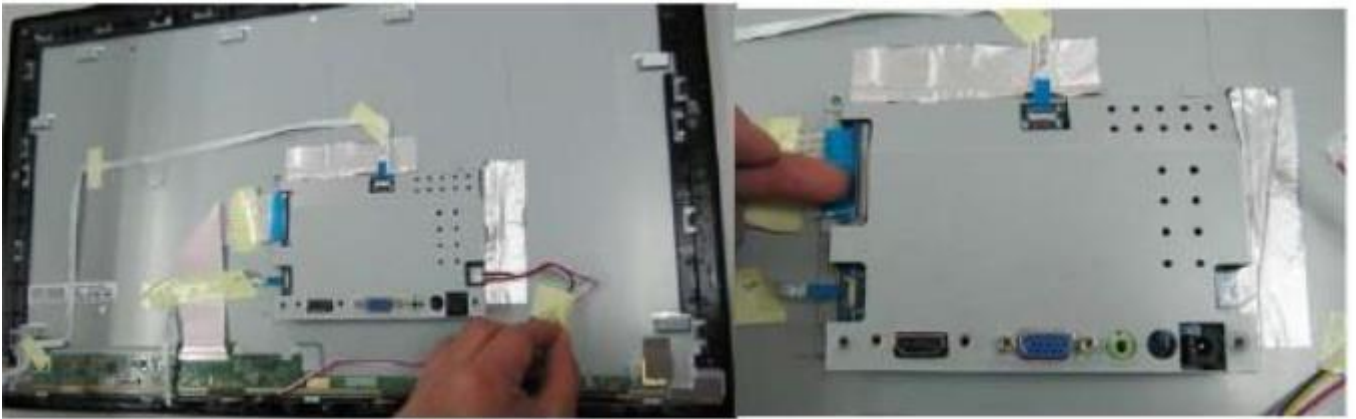
Step.3 Remove the rear cover and pull the connect out



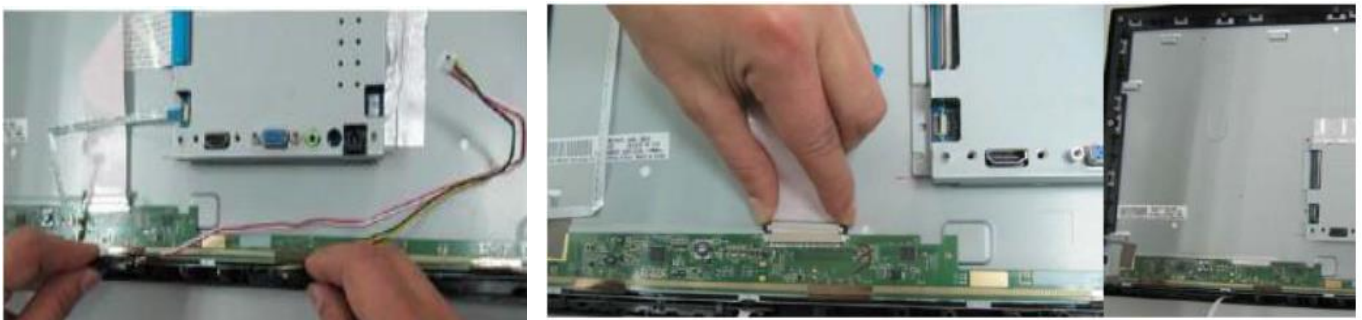
Step 4. Pull the base assembly out again from Rear Cover



Step.5 Remove all yellow tapes and separation four connectors



Step.6 separate speaker from MID_FRAME and LVDS & Backlight FFC from LCM



Step.7 Separation two AI tapes and remove the shielding case



Step.8 Unscrew screws



Step.9 Remove from MID frame



Step.10 Separation the display key assembly



Step.11 Separation the cable and the plastic



Step.12 Unscrew two hex nuts and two screws



Step.13 Unscrew the screw and separate base & stand assembly



Step.14 Separation four cilicon rubbers

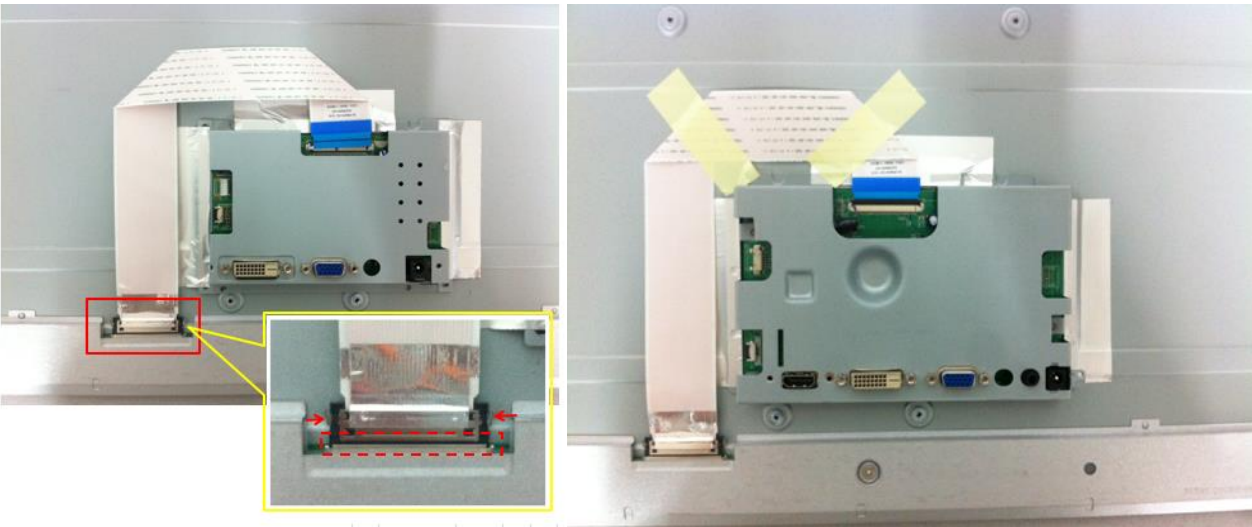


➤ **Assembly Procedure**

Step1. Assembly main board into shielding, use AL tape fix. Assembly main board on LCM.



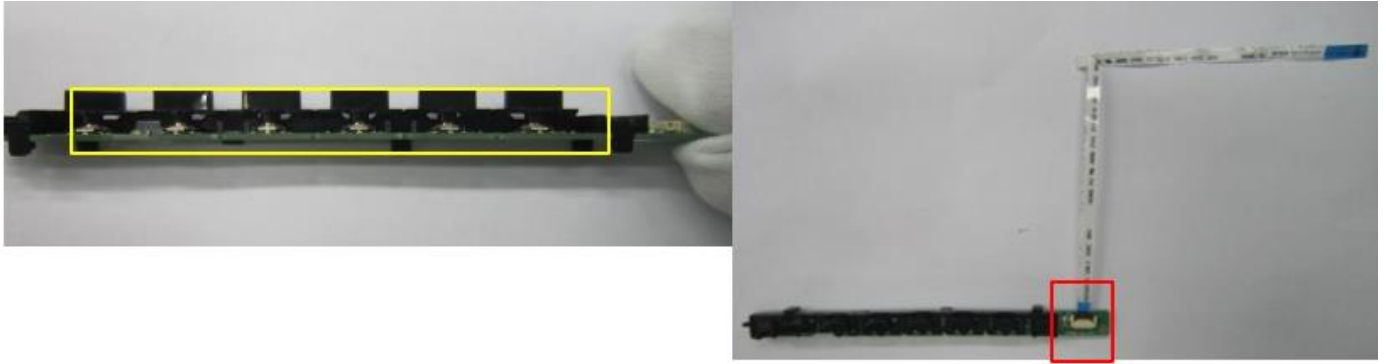
Step2. Insert 30 pin LVDS FFC to LCM, then use yellow tape to tape FFC.



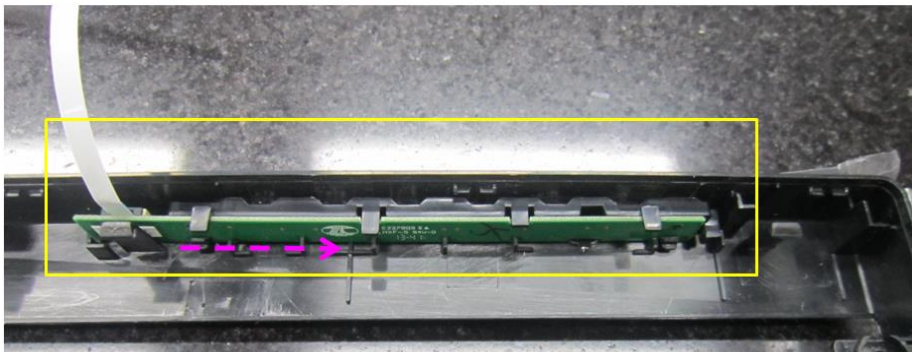
Step3. Insert 6pin back light wireless to panel and main board.



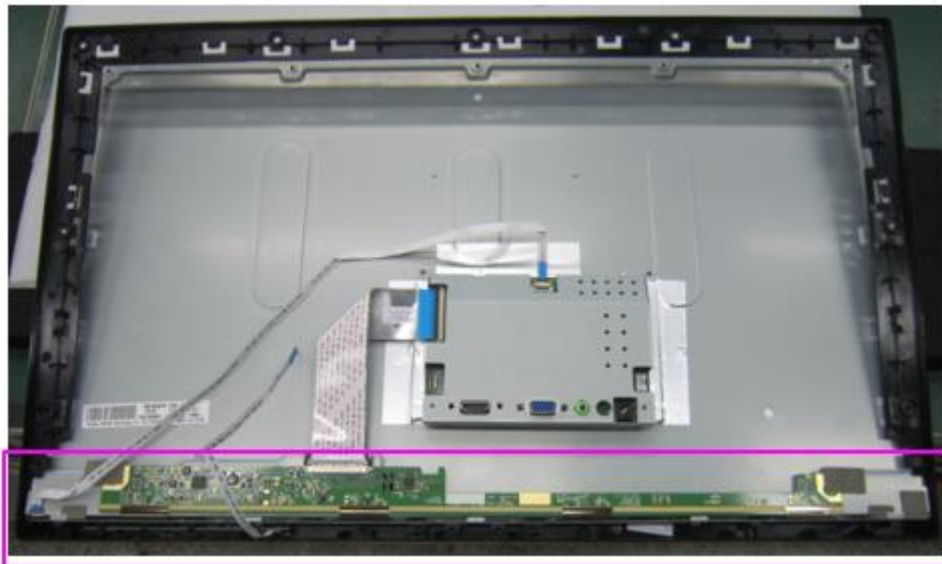
Step4. Assembly the key board to the plastic and 8pin FFC assembly to key board.



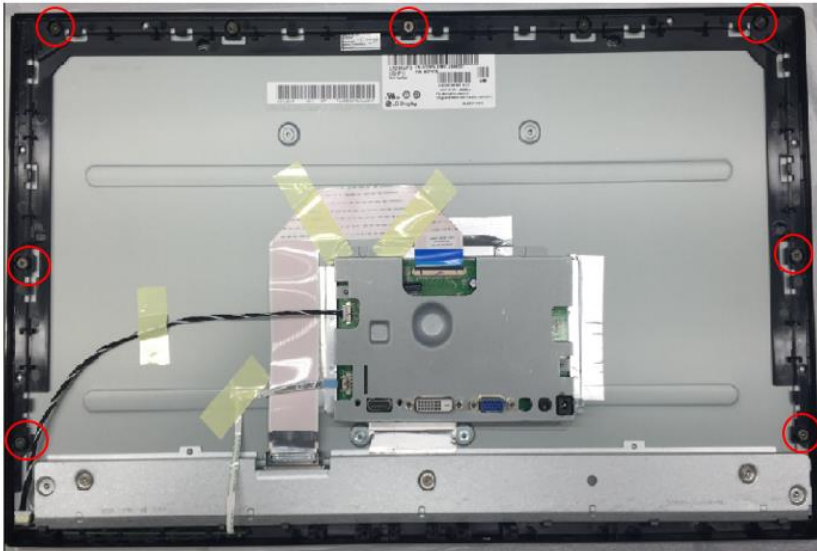
Step5. Assembly the plastic to mid-frame.



Step6. Assembly middle frame with LCM .



Step7. Lock middle frame screw (in red circle),and insert 8pin FFC to main board.



Step8. Assembly rear cover, and push around the surrounding to assembly well.

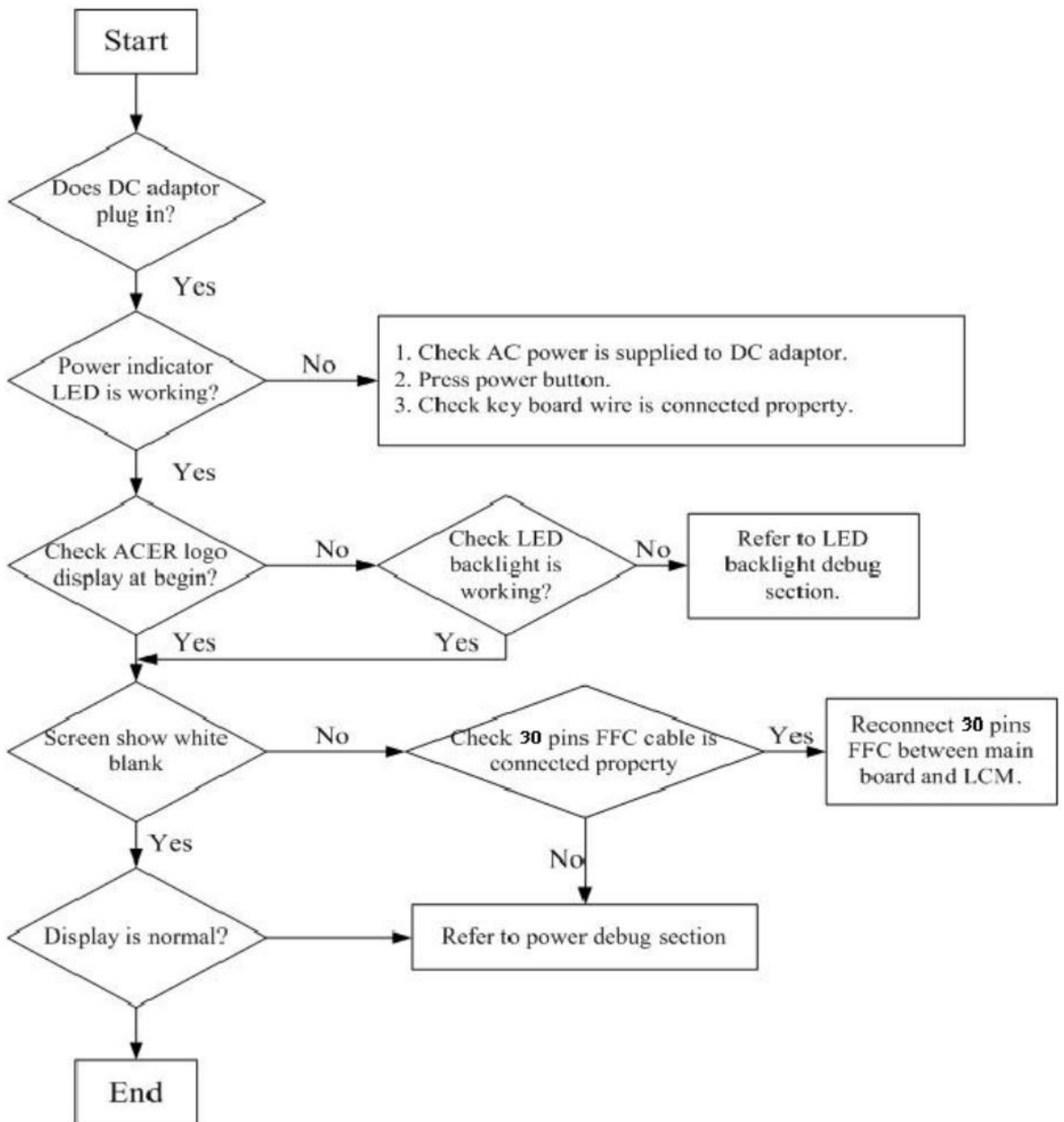


Step9. Lock the screw on rear cover (in red circle).

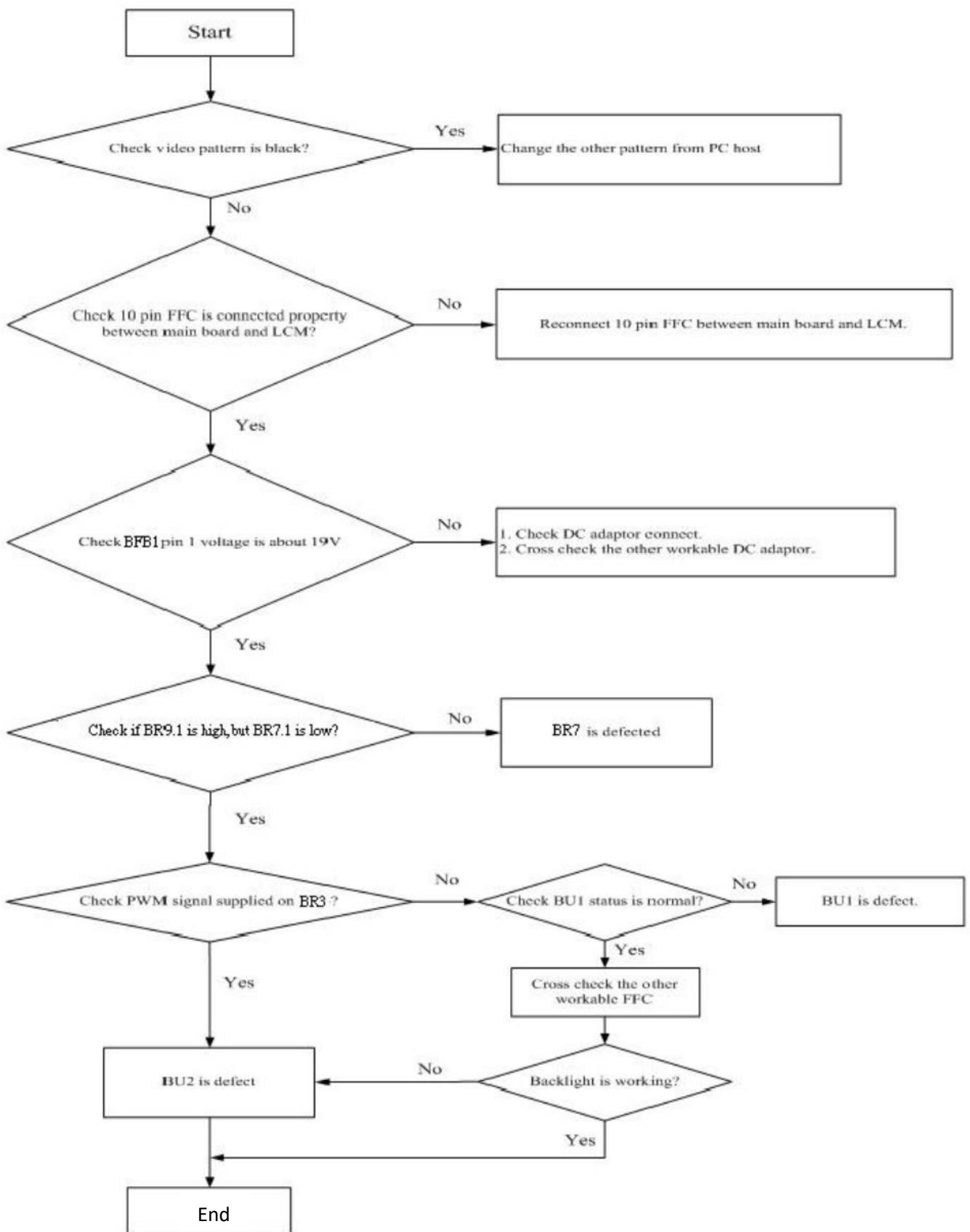


5. Troubleshooting

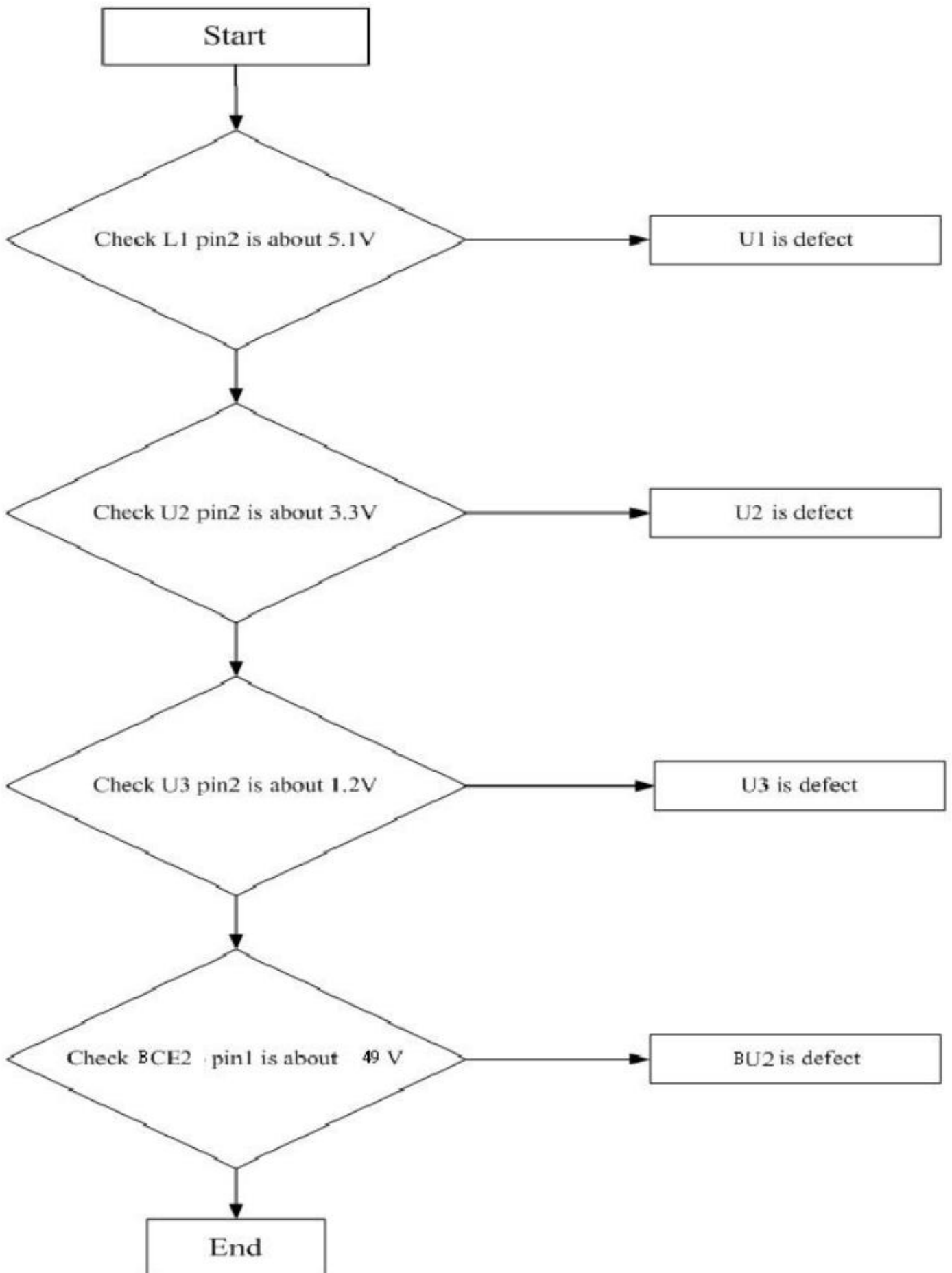
5.1 Test flow for abnormal machine:



5.2 LED backlight debug flow:



5.3 Power debug flow:



6. FRU (Field Replaceable Unit) List

Parts Photo	SPL_Category	Acer PN	Raken PN	ODM Description
	ADAPTER	25.T4BM5.001	R030070131495	A-D adapter 1.3 A 19V ADS-25SG-19-3 19025E(VI) _ ACER S200HQL
	MAIN BOARD	55.T4BM5.005	R352419820150	MAIN BD ASS'Y R240HY bidx (LM238WF2-RSAN1) ES7.0 no ES logo
	KEY BOARD	55.T1XM5.002	R352500220156	DISPLAY BOARD ASS'Y (Acer G257HL bidx) (R2)
	CABLE	50.T2PM5.001	R046030060311	WH A1251Y-06/SHJP-06V #28 280mm W/B LF
	CABLE	50.T2PM5.008	R046428080671	WH FFC 8P(0.5mm)175mm(1FOLD PRO)60V G/F (A8 A15)LF
	CABLE	50.T2PM5.012	R046428080672	WH FFC 8P(0.5mm)175mm(1FOLD+PRO)60V G/F (A5+A15)LF
	CABLE	50.T2PM5.014	R046428301342	WH FFC 30P(1.0mm)300mm (2FOLD)60V G/F W/CONN.(A15+BC)LF
	CABLE	50.T2PM5.004	R032100H01080	RGB CABLE 1500mm 15(3R-3R) #30*3G+#30*2C+#30*4C AL65%
	POWER CORD	27.LTK0K.001	R032030000180	POWER CORD 1500mm 16A 250V EUROPE
	CASE/COVER/BRACKET ASSEMBLY	60.T4AM5.001	R180105610010	BASE ASSY (R0)
	CASE/COVER/BRACKET ASSEMBLY	60.T4BM5.001	R181304007010	BASE NECK ASSY(R240&R250)
	CASE/COVER/BRACKET ASSEMBLY	60.T2PM5.007	R180102028062	REAR COVER(ABS 94-HB/K22088)(G247HYL bidx-lehui) ASS'Y
	CASE/COVER/BRACKET ASSEMBLY	60.T4BM5.003	R180101019020	MID FRAME(ABS 94-HB/K22088)(G247HYL) ASS'Y
	CASE/COVER/BRACKET ASSEMBLY	42.T0LM5.001	R170104004010	DISPLAY KEY(ABS 94-HB/K21411)(G227HQL)
	CASE/COVER/BRACKET ASSEMBLY	33.T2PM5.001	R171201000650	MAIN SHIELDING(SECC 0.5t)(G247HYL bidx)
	LCD	KL.23802.008	352451620395	LCM ASS'Y G247HYL(LM238WF2-RSAN1)